

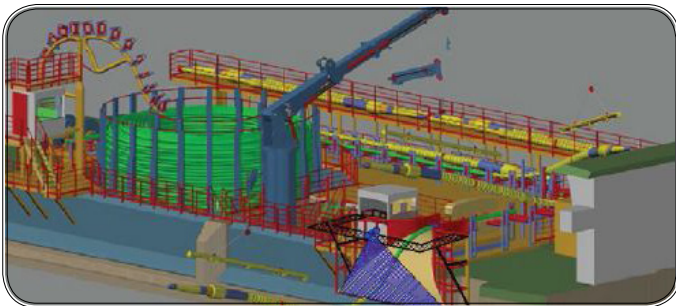
Teledyne PDS

Cable Lay Monitoring

With over 30 years dredge market experience, Teledyne RESON produces precision tools for any user. This leaflet gives you an overview of how we can improve your business.

Our client base includes large and small dredging companies, hydraulic engineering, construction, offshore and survey firms. With those in mind, all our products are designed to withstand the harsh environment in which the equipment is used. Whether you are involved in hydrographic surveys, dredge projects like rock dumping or excavating, or construction projects like building breakwaters, pipe- and cable lay activities, our solutions increase your efficiency and minimize your downtime.

Teledyne RESON's Teledyne PDS-Cable-Lay application provides the functionality tailored for the operator to carry out his job efficiently. Prior to the start of the actual cable lay process (pre) engineering work, such as vessel route calculations takes place in the office. PDS Cable-Lay allows you to use all this a-priori information during your project. The a-priori information is loaded into PDS Cable-Lay using import wizards and is visualized during project to ensure the project accuracies are met.

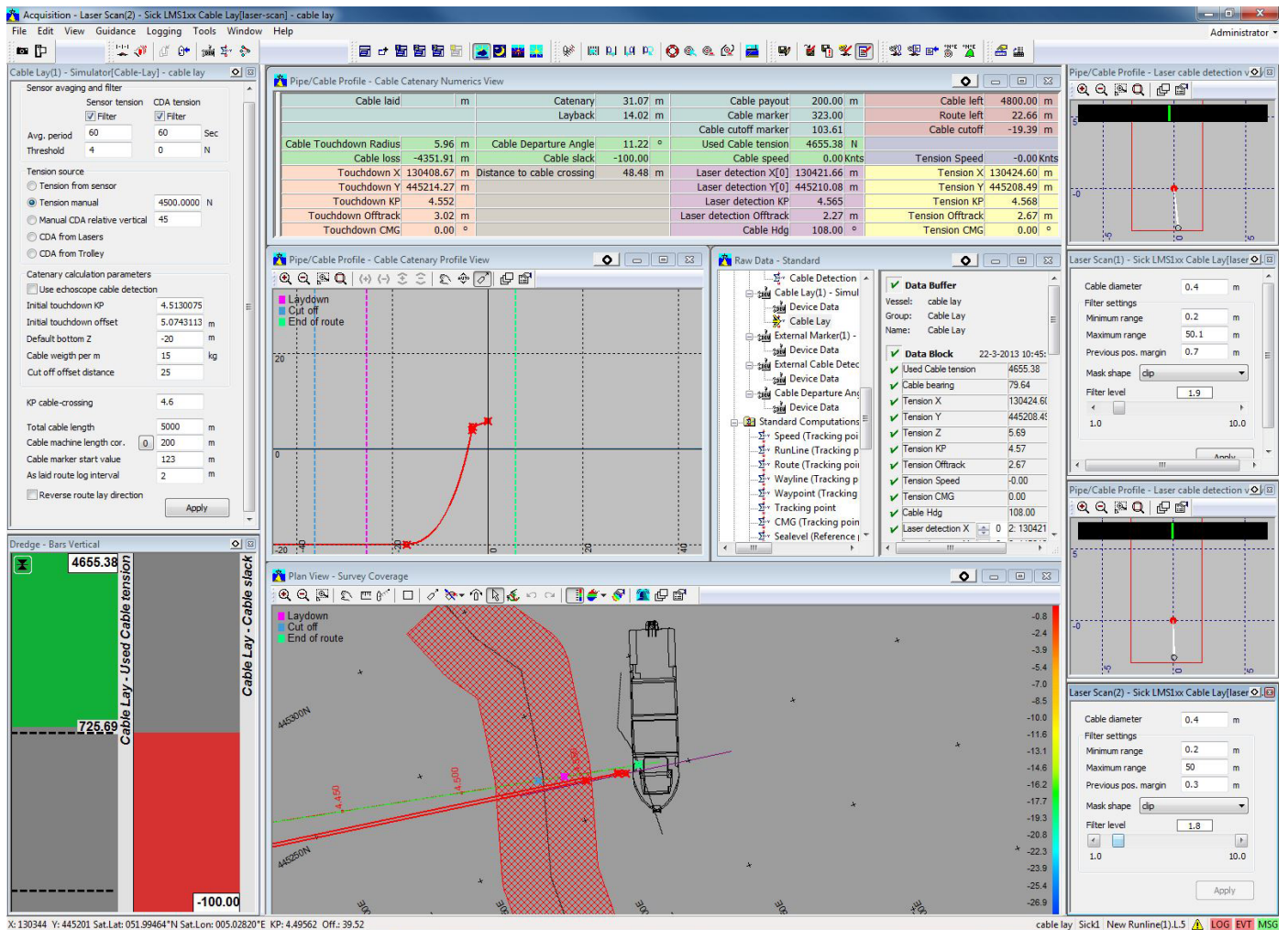


The Teledyne PDS-Cable-Lay provides various layouts to support your Cable Lay Project in the best way possible. Not only will PDS Cable-Lay visualize the theoretical values, it will also display the cable lay process in real time. For example using information from sensors such as tension values from the tension machine and the trolley, and using the cable chute position, Cable Departure Angle (CDA) is calculated and displayed. In short PDS Cable-Lay will show all parameters that are essential throughout the project.

Whether it is touchdown position, catenary- or tension point or any other parameters, all of these can be visualized, either numerically or graphically. In one screen the project surveyor has all the information available, allowing him to take immediate action when actual values start to deviate too much from a-priori calculated values. During the project all data can be logged, for later review. The actual cable route is logged in a separate file. This means your as-laid route is ready for distribution the moment you have placed the cable at final touchdown point.

FEATURES

- Teledyne RESON's products give you accurate and reliable working tools
- Teledyne PDS-Cable-Lay ensures maximum use of the engineering preparation done in the office by importing these data
- Teledyne RESON provides sensors for optimum control of your construction project
- Teledyne PDS gives you a proven experience you can trust to support your business
- The application can be extended with other Teledyne PDS apps



Why choose Teledyne PDS Cable Lay Monitoring for your application ?

- Reliable monitoring software and sensors to maximize uptime
- Improving your return to investment
- Teledyne PDS flexible software, tuned for standard and special projects on a cost effective platform