

Teledyne Webb Research

SFMC Software

Slocum Fleet Mission Control (SFMC)

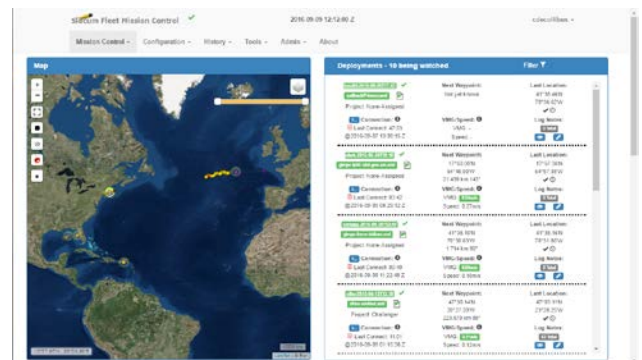
Glider Piloting Made Easy

Teledyne Webb Slocum Fleet Mission Control (SFMC) is a software suite used to manage multiple Teledyne Webb Research Slocum glider deployments around the world. SFMC builds on the traditional Dock Server software application and provides a revolutionary web based front end that allows for collaboration among multiple glider pilots. The clean layout of the SFMC enables the user to get quick access to important information in order to make real-time piloting decisions. The SFMC highlights pertinent information, significantly reducing piloting time and allowing smaller teams to manage large fleets of gliders.

SFMC provides a web user interface (UI) that includes an interactive map for displaying glider positioning details including past, recent and planned locations. Users log into SFMC with individual accounts to perform actions in accordance with assigned roles and defined user privileges. Once logged in, users can register gliders, view active and historical glider deployments, download data from gliders, create waypoint plans and upload them to gliders, and manage properties associated with glider deployments. This user account management infrastructure provides secure piloting, allowing users to easily make and track changes to deployed gliders, thus simplifying the process of glider piloting.



Map Panel



SFMC Dashboard



Glider Piloting with SFMC

FEATURES

- Web based glider command and control
- Waypoint planning
- Integrated glider terminal
- Real-time sensor monitoring
- Customizable maps and overlays
- User login accounts with varying permission levels

BENEFITS

- Active vehicle tracking and mission planning
- Consolidated data management
- Ability to access tools from any platform (PC, MAC, tablet, smartphone)
- Increased security



TELEDYNE WEBB RESEARCH
Everywhere you look™

SFMC Software

Slocum Fleet Mission Control

Product Description

Option 1: Yearly Dockserver Software License

Includes:

- Access to the latest production dockserver software releases as they become available
- SFMC tools for use with up to 5 gliders and 10 user accounts

Option 2: Yearly Datahosting Service

Includes:

- Access to the latest production dockserver software releases as they become available
- SFMC tools for use with up to 5 gliders and 10 user accounts
- An account on TWR datahosting service that can be used as a primary or secondary dockserver
- Based on SFMC tools
- Redundant server at secure off-site location to ensure reliability
- Accounts for up to 5 gliders and 10 users

Account Levels:

Level	Gliders	Users
Basic	5	10
Advanced	10	20
Super	Unlimited	Unlimited

General Specifications

System Requirements

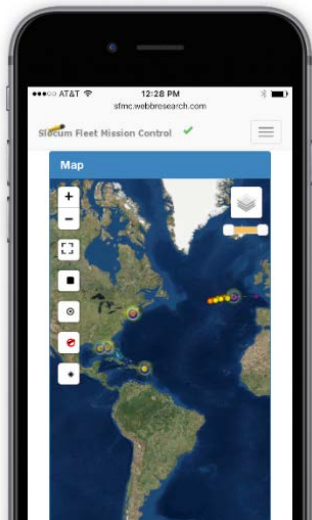
One or more CPUs that allow for a minimum of 8 cores operating at 2.7GHz

16 GB RAM

500 GB hard disk

Operating System Requirements

CentOS 7+.



Piloting View from a Smartphone

