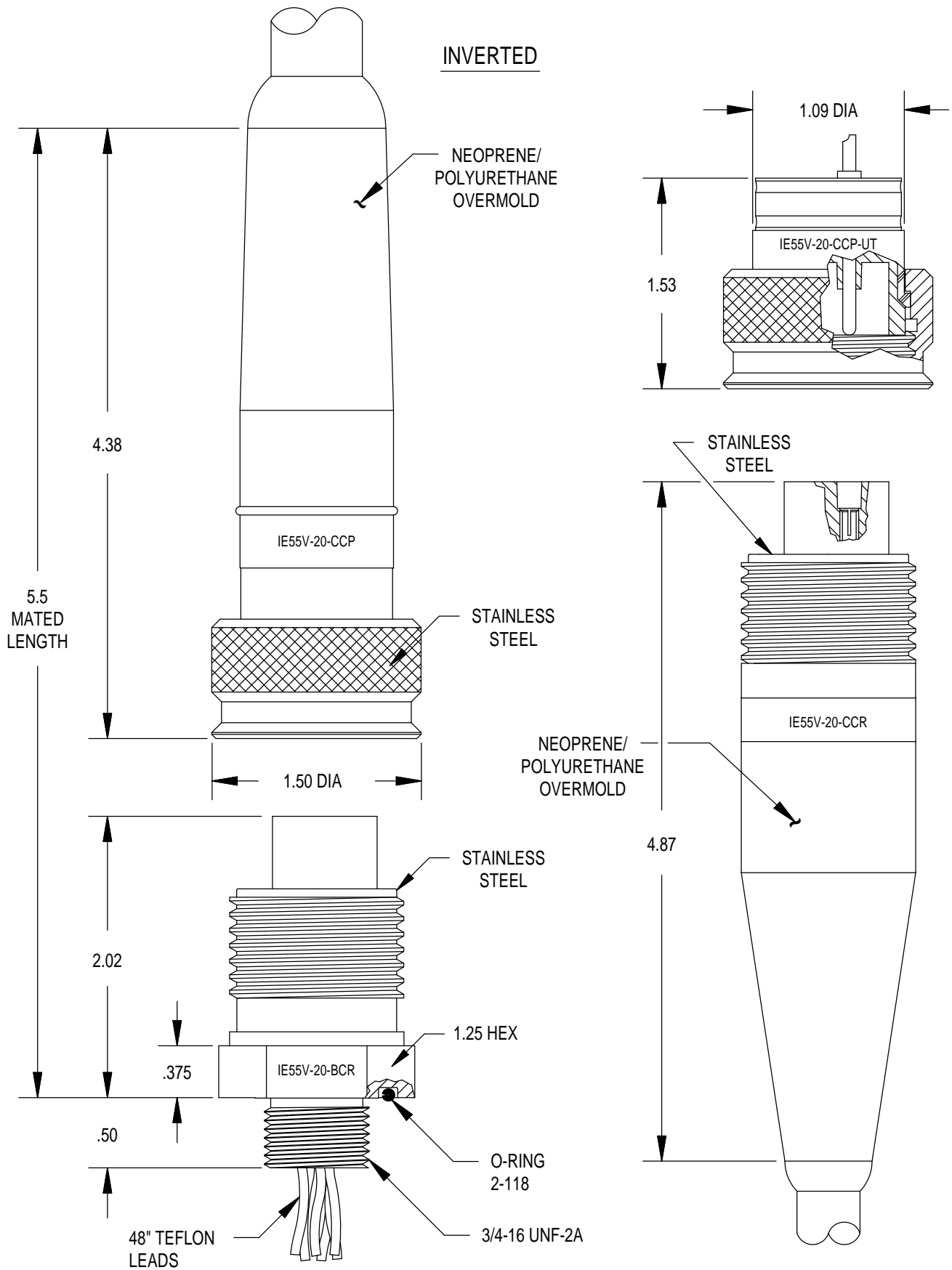
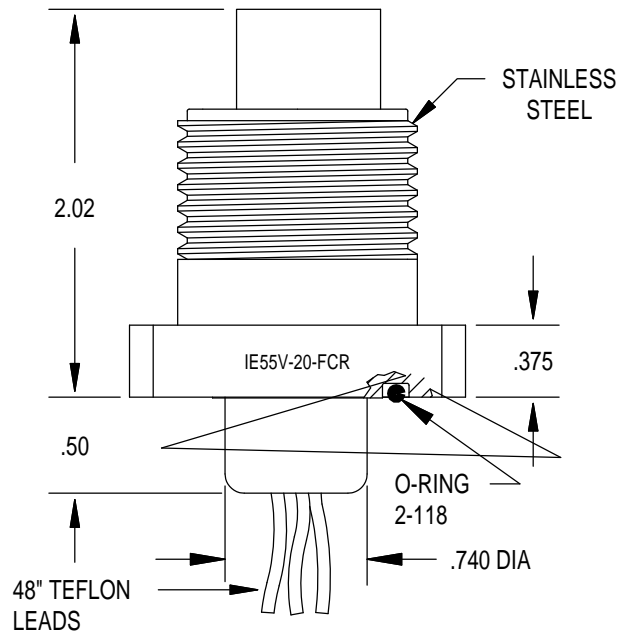
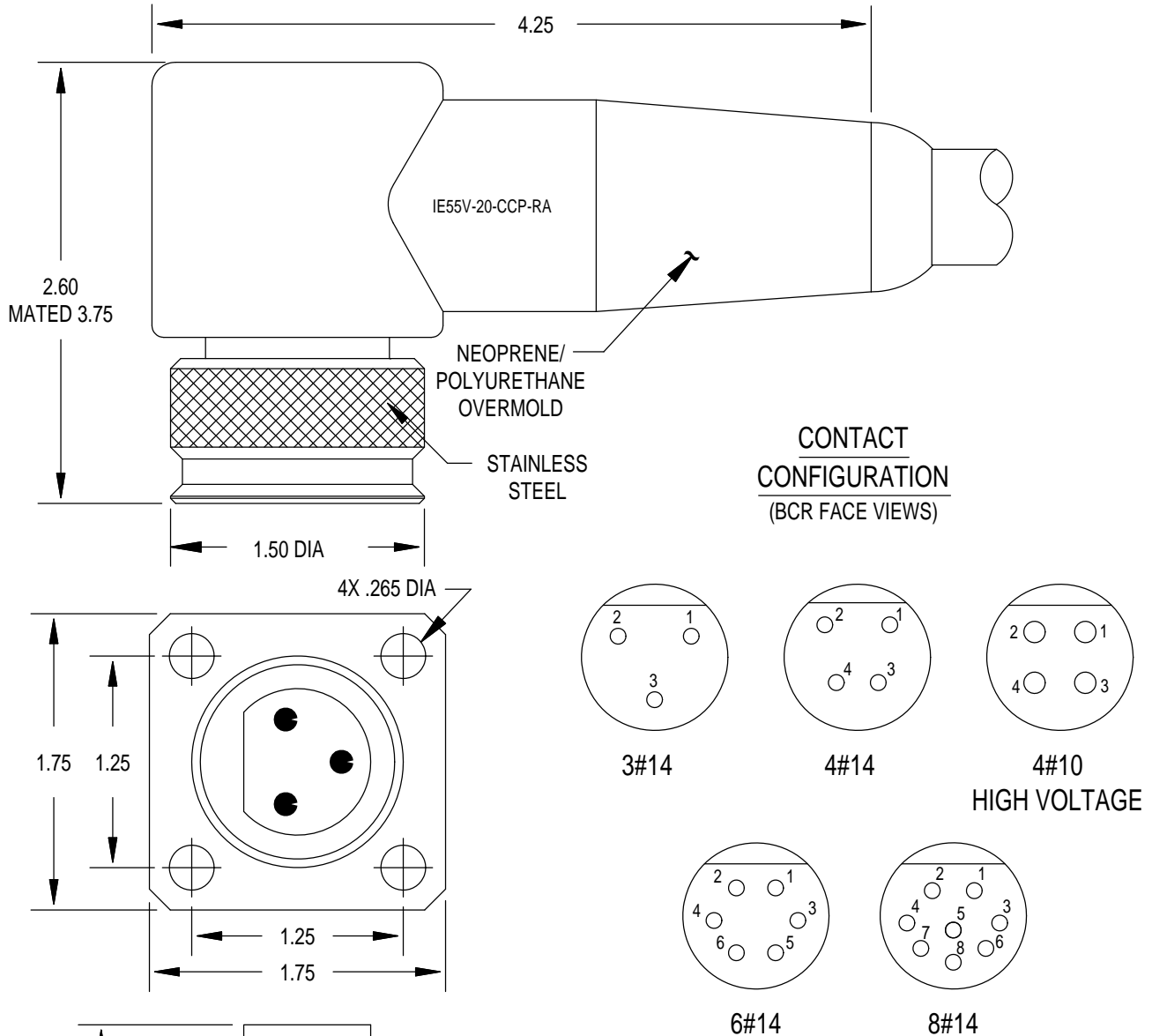


-
- | | |
|--------------------------|--|
| DESCRIPTION AND MATERIAL | <ul style="list-style-type: none">• Body and engaging nut are 316 Stainless Steel, passivated per QQ-P-35 Type VI.• To 10,000 PSI in mated condition.• Bulkhead connector design open face pressure rated to 5,000 PSI.• Contacts gold plated per MIL-G-45204.• Engaging nuts have Acme threads for rugged applications and a quick connection.• Working voltage - 600 VDC (Contact factory for high voltage applications.)• Bulkhead has sockets, cable connector plug has pins. |
| CABLE | <ul style="list-style-type: none">• CCP, CCP-R/A and CCR are molded on standard 24" 16 AWG SO cable.• Other cable options available at customer's request.• BCR/FCR on standard 48" teflon leads, Type E per MIL 16878/4 16 AWG.• Un-Terminated versions of CCP available. |
| USES | <ul style="list-style-type: none">• Heavy Duty applications.• Hazardous environment.• Power Transmission.• Signal Telemetry.• ROV applications. |
| GUIDELINES | <ul style="list-style-type: none">• All mounting and sealing surfaces require a 32 finish.• Lubricate mating surfaces with 3M Silicone Lubricant or equivalent, DO NOT grease! Connectors must be lubricated on a regular basis.• Lubricate o-rings with Dow Corning #111 Valve Lubricant or equivalent.• Use Dust Caps and keep connectors clean to prevent damage in storage and service.• Keep o-ring grooves clean and avoid cuts, nicks and tears on rubber surfaces.• Elastomers can be seriously degraded if exposed to direct sunlight or high ozone levels for extended periods of time.• Clean plugs and receptacles with soap and fresh water. Rinse out with alcohol, allowing connector to air dry.• Replace o-rings when re-using connectors. |



IE55V-20

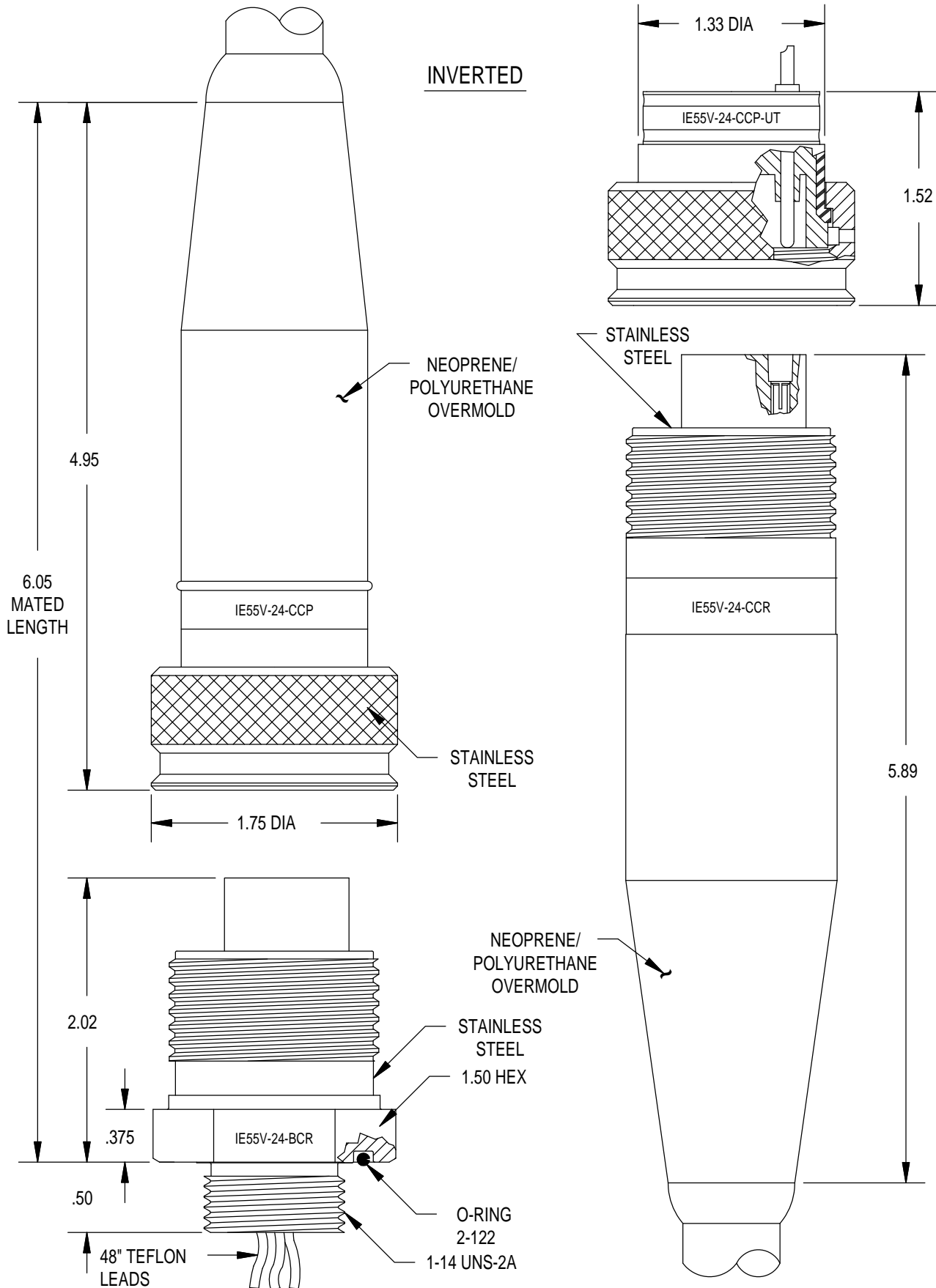
IE55V INVERTED RUBBER MOLDED METAL SHELL SERIES



MATED PRESSURE RATING (psi)	10,000
MOUNTING TORQUE FOR BCR	not to exceed 165 in lbs
DUMMY PLUG FOR BCR, FCR, CCR	IE55V-20 *-SCP
DUMMY PLUG FOR CCP	IE55V-20 *-SCR
* Specify number of contacts.	

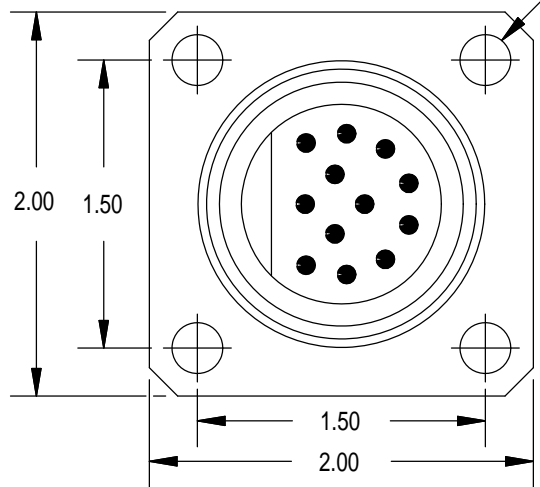
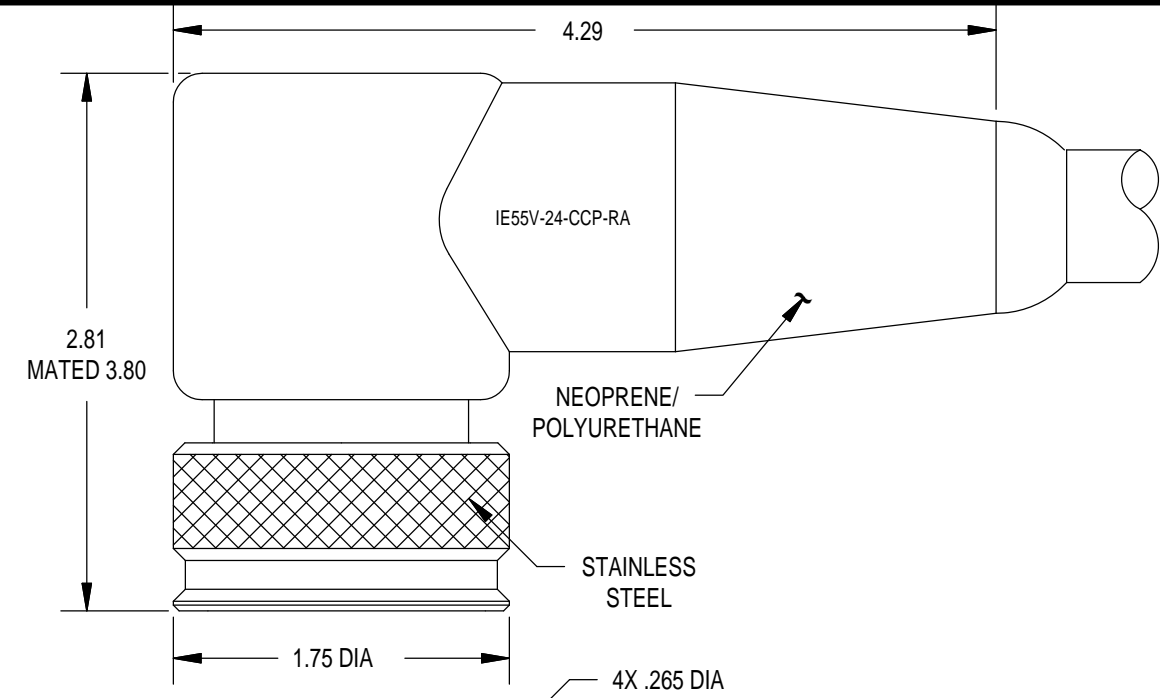
IE55V-24

IE55V INVERTED RUBBER MOLDED METAL SHELL SERIES

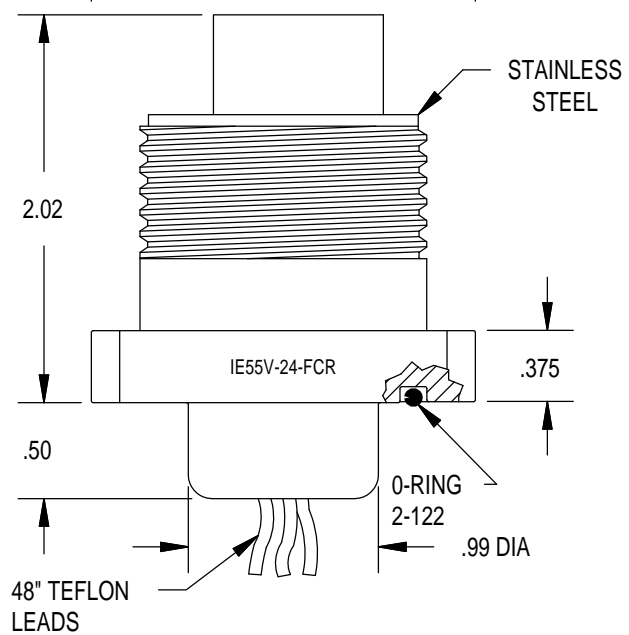
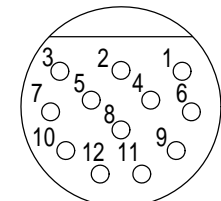


IE55V-24

IE55V INVERTED RUBBER MOLDED METAL SHELL SERIES



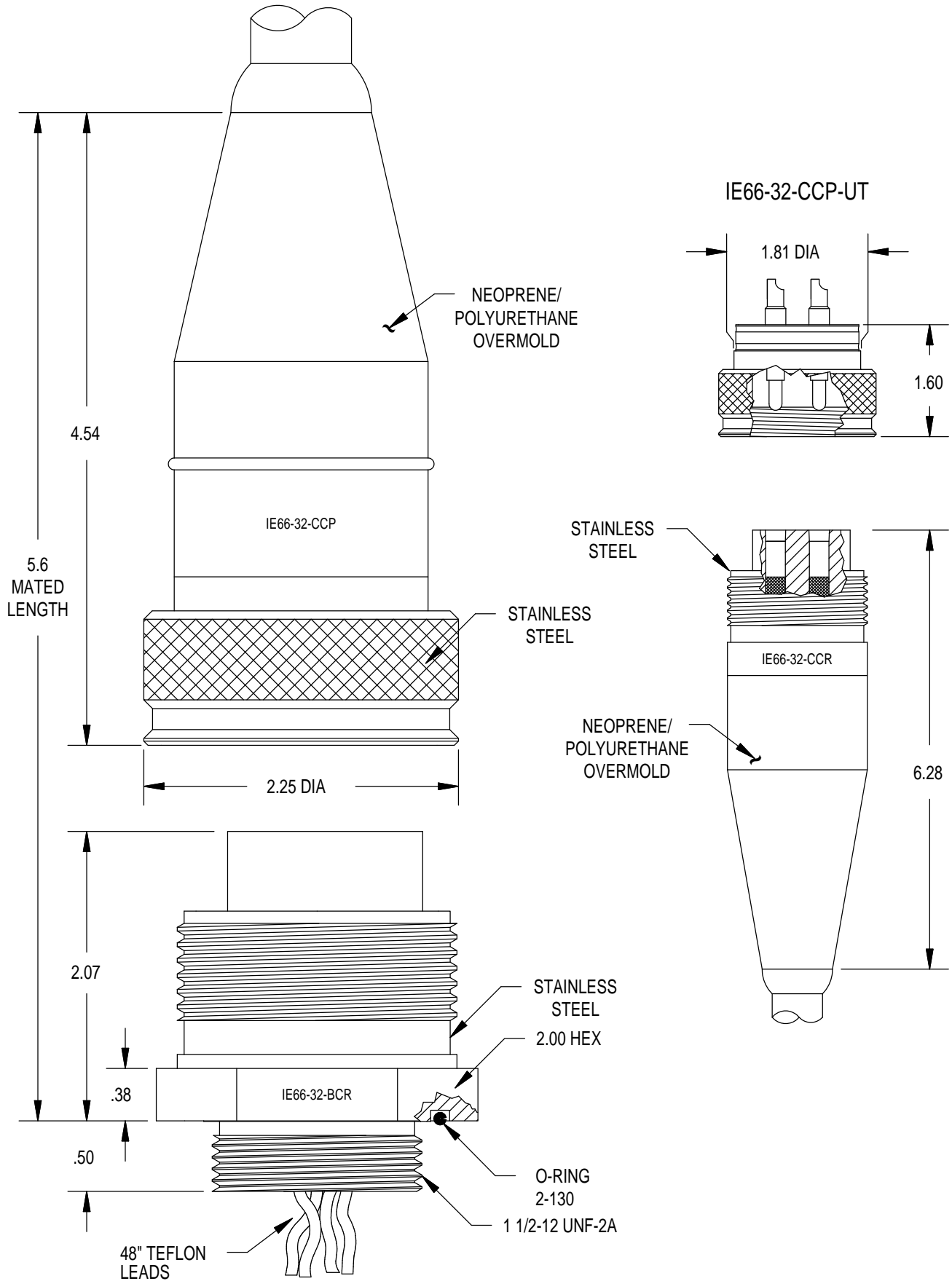
CONTACT
CONFIGURATION
(BCR FACE VIEW)

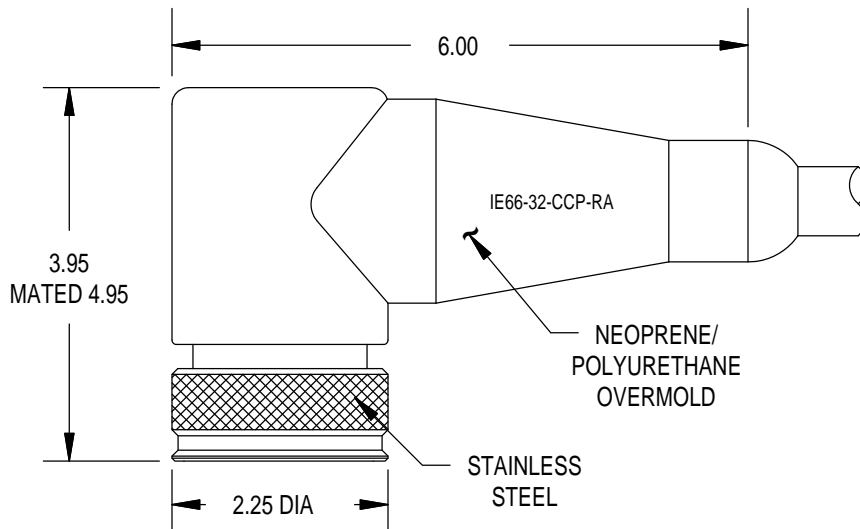


MATED PRESSURE RATING (psi)	10,000
MOUNTING TORQUE FOR BCR	not to exceed 225 in lbs
DUMMY PLUG FOR BCR, FCR, CCR	IE55V-2412-SCP
DUMMY PLUG FOR CCP	IE55V-2412-SCR

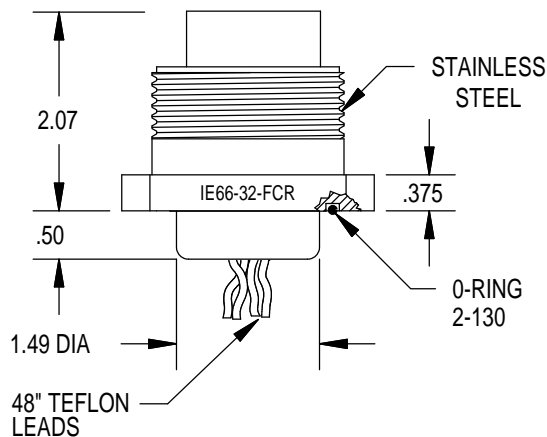
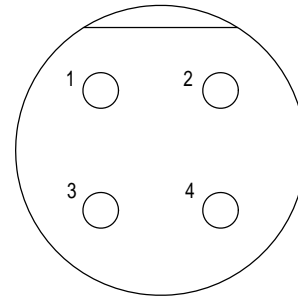
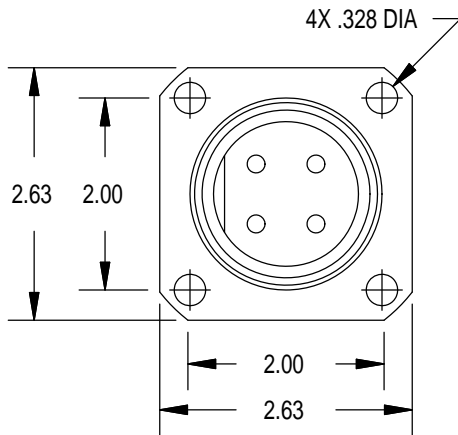
IE66-32

IE66 RUBBER MOLDED
METAL SHELL SERIES





**CONTACT
CONFIGURATION**
(BCR FACE VIEWS)



MATED PRESSURE RATING (psi)	10,000
MOUNTING TORQUE FOR BCR	not to exceed 335 in lbs
DUMMY PLUG FOR BCR, FCR, CCR	IE66-3204-SCP
DUMMY PLUG FOR CCP	IE66-3204-SCR

THIS PAGE INTENTIONALLY LEFT BLANK