

T2250-360

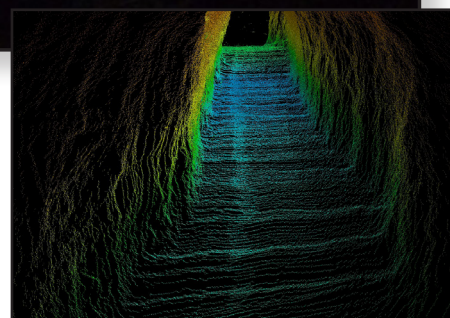
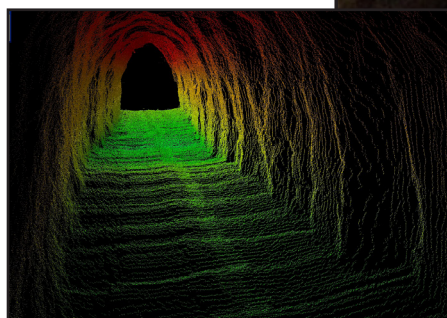
3D 360° Tunnel Profiler



The T2250 from Teledyne BlueView is a 360 degree multibeam profiler which has specifically been designed to yield continuous high resolution imagery of the walls of submerged tunnels. Utilizing high frequency low power acoustic multibeam technology the system will stream a continuous 360 deg profile to Teledyne PDS software recommended option to create a dense 3D point cloud from which visual damage assessment and measurements in three planes can be conducted. Suited for ROV, AUV or crawler deployment and based on field proven technology extensively used for seabed profiling applications over the last 10 years in AUV and ROV programs around the globe and has now been adapted to meet demand for improved tunnel inspection data. Suitable for tunnels up to 16m in diameter, the T2250 is a compact and low power solution for submerged tunnel inspection.

Note:

- Sound Velocity value required by tunnel profiler (suggest SVP70 or similar)
- Positioning / depth information required to calculate Z-axis
- Teledyne PDS for data processing & visualization is included in the standard scope of supply



PRODUCT FEATURES & APPLICATIONS

Features:

- Full 360 degree profile
- Bundled Teledyne PDS software

Benefits:

- Single sonar 360 degree profiling
- Real time 3D point cloud monitoring

Applications:

- Internal dam inspections
- Vertical shaft inspections
- Water supply tunnel inspections



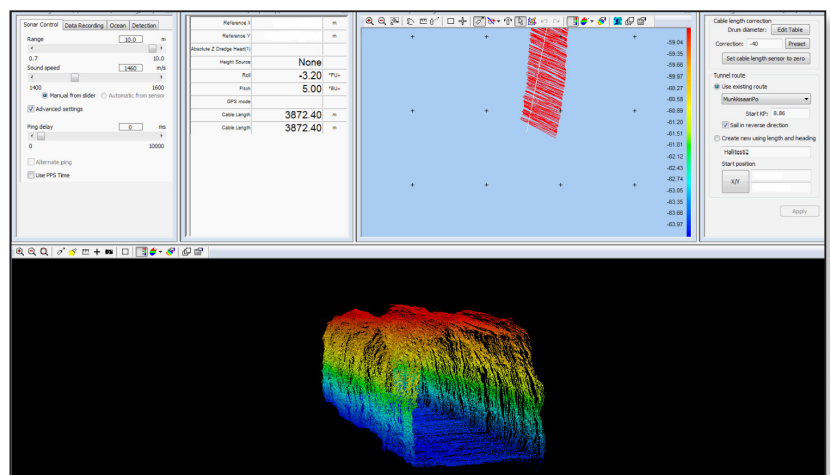
T2250-360 3D 360° Tunnel Profiler

SYSTEM SPECIFICATIONS



		T2250-S-MKS
Sonar	Field-of View	360°
	Max Range	10 m (32.80 ft.)
	Optimum Range	1 - 8 m (3.28 - 26.25 ft.)
	Range Resolution	0.6 cm (0.24 in) Nominal
	Range Diameter	2 - 16 m (6.60 - 52.80 ft.)
	Beam Width	1° x 1° Nominal
	Beam Spacing	0.18°
	Number of Beams	2100
	Ping Rate (approx.)	@ 1.5 m (1.6 ft.) = up to 20 Hz @ 2.5 m (8.2 ft.) = up to 14 Hz @ 5 m (16.4 ft.) = up to 8 Hz @ 10 m (32.8 ft.) = up to 4Hz
	Frequency (center)	2250 kHz
Electrical	Supply Voltage	18 - 48 VDC
	Power @ 24VDC	Min = 32W @ 3 m range (9.84 ft.) Max = 45W @ 10m range (32.80 ft.)
Mechanical	Weight in Air	(approx.): 15kg
	Weight in Water	buoyant approx. 0.46kg (fresh water @ 20°C)
	Depth Rating	1000 m
	Size L x W	568.45 mm x 199.90 mm (22.38 in x 7.87 in)
	Connector Options	MKS10

Teledyne PDS Software
Tunnel Profile screenshot
image



TELEDYNE MARINE
BLUEVIEW
Everywhereyoulook™

www.teledynemarine.com/blueview

Tel. +45 4738 0022 (Europe) • Tel: +1 805 964 6260 (USA)

Email: blueview@teledyne.com