

M900-2250-S 130/45-Mk2

High Resolution Dual-Frequency Sonar



The dual frequency M900/2250-S 130/45-Mk2 is a new configuration of the leading BlueView M900/2250 optimized for superb image quality in challenging shallow water environments. The 900 kHz offers high-resolution long range navigation, object detection, and obstacle avoidance, while the 2250 kHz provides ultra-high resolution at close range. ROV navigation, diver hand held, hull inspections, structure inspections, diver monitoring, and search and recovery are a few applications that benefit from the dual-frequency's imaging capabilities.

All M Series sonar operate while in motion or from a stationary position delivering real-time imagery and data.

Applications:

- ROV navigation
- Object detection
- Target tracking
- Obstacle avoidance
- Operations monitoring
- Equipment/tool placement
- Search and recovery
- Area survey
- Close-range high-resolution object identification

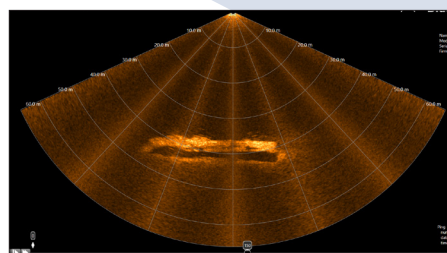
Developed with input from industry leading customers with decades of experience in some of the most demanding applications. For those who demand uncompromising sonar data quality in a compact and easy to interface package.

System standard configurations:

- Selectable field-of-view
- 1000m depth rating

Options:

- Burton connector
- Impulse MKS connector



900kHz image of German Schnellboot(fast boat), these craft were 35m long and 5.1m in beam.

PRODUCT FEATURES & BENEFITS

Features:

- Real-time video like imagery
- Motion immune imagery
- Record raw acoustic data for enhanced controls during playback
- Point to point measurements
- Automatic and manual acoustic source level control
- Capture sonar video with position data

Benefits:

- Open nose cone for superior data quality
- Robust design including splash-mate connector
- Optimized for shallow water
- Narrow vertical field of view on 900 kHz for longer range in shallow environments
- Unique dual frequency combination and wide 130 degree field of view



TELEDYNE MARINE
 BLUEVIEW
 Everywhereyoulook™

M900-2250-S 130/45-Mk2



SYSTEM SPECIFICATIONS

SONAR

Operating Frequency	900 kHz	2250kHz
Field-of View	130°	45°
Max Range	100m (328ft)	10m (33ft)
Optimum Range	2-60m (6.6-197ft)	0.5-7m (1.6-23ft)
Beam Width (horizontal)	1°	1°
Beam Width (vertical)	12°	20°
Number of Beams (maximum)	768	256
Beam Spacing	0.18°	0.18°
Range Resolution	1.3cm (0.54 inch)	0.6cm (0.25 inch)
Update Rate*	Up to 25Hz	Up to 25Hz

INTERFACE

Supply Voltage	12-48 VDC
Max Power Consumption**	2250 kHz - 25.8 W 900 kHz - 20 W
Connectivity	Ethernet
Connector	Impulse MKS(W) Splash-mate (standard) Impulse MKS, Burton (optional)

MECHANICAL

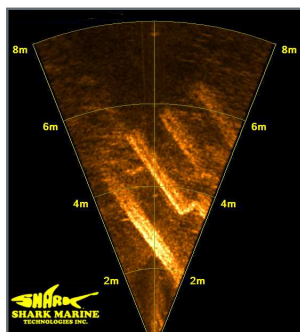
	Depth rating	L	W	Can diameter	Weight in air (kg)	Weight in water (kg)
BlueView M900 S Mk2***	1000m	223 mm (8.8 inch)	Ø127mm (5inch)	Ø101.6mm (4 inch)	2.6	0,7

* Range-dependent

** Standard unit and 24 VDC

*** Length does not include connector length

****All frequencies and beam widths are nominal values



Data courtesy of Shark Marine



BlueView M-Series Accessory Kit (example)

ACCESSORY KIT SCOPE OF SUPPLY

- Shipping case
- Ethernet cable 2.1m (7ft)
- Power Over Ethernet (PoE) box
- Cables whip 1.2m (4ft)
- Sonar to Surface cable 8m (25ft)
- Power cord (NEMA and EU)
- Manuals on USB disk

For relevant tolerances for dimensions above see detailed outline drawing, available on request.

*All frequencies and beam widths are nominal values.



TELEDYNE MARINE
BLUEVIEW
Everywhere you look™

www.teledynemarine.com/blueview

Tel. +45 4738 0022 (Europe) • Tel: +1 805 964 6260 (USA)

Email: blueview@teledyne.com